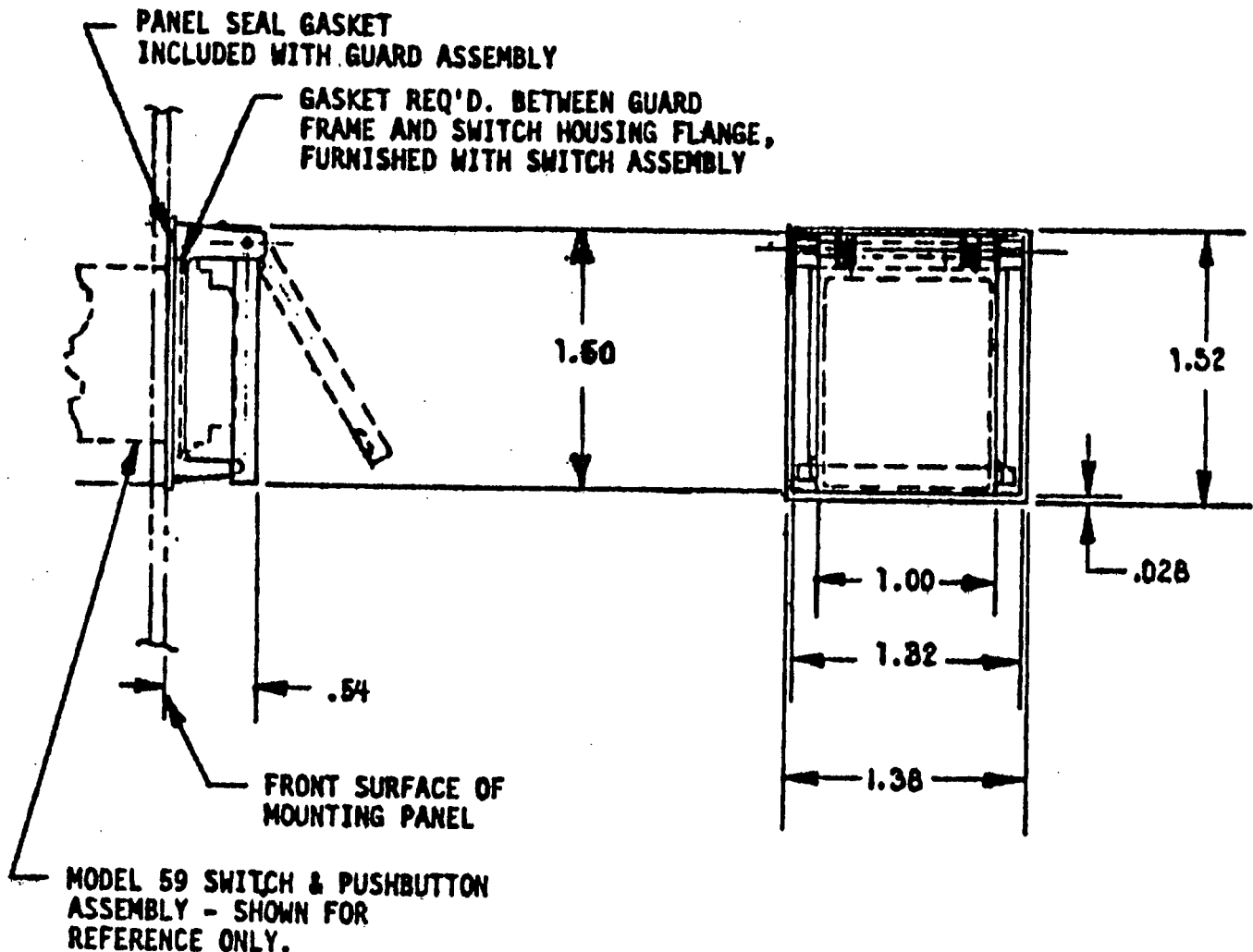


P/N 15077 GUARD, PUSHBUTTON, SQUARE DRIPPROOF SEAL TYPE

The pushbutton guard described herein is designed for use with the standard Model 59 or Model 59C switch and indicator. Its mounting frame is made of black, glass filled nylon; the guard is a clear thermoplastic material, and the panel seal gasket is made of a black, silicone rubber.

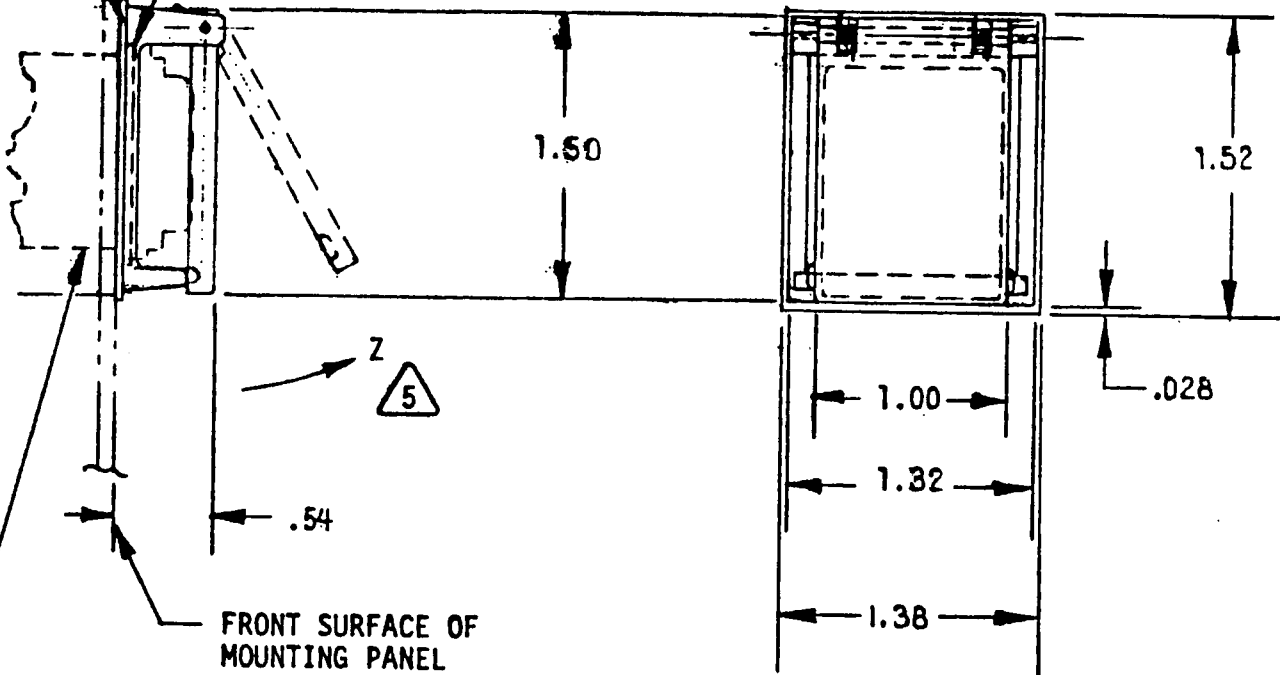
The transparent pushbutton guard must be lifted to allow actuation of the switch, thereby preventing accidental actuation. Spring loaded transparent cover remains closed until manually raised. When released, the guard swings freely to the closed position. Pushbutton guard assembly is easily mounted by simply slipping over switch body at time of installation.

When ordering, specify part number 15077.



PANEL SEAL GASKET
INCLUDED WITH GUARD ASSEMBLY

GASKET REQ'D. BETWEEN GUARD
FRAME AND SWITCH HOUSING FLANGE,
FURNISHED WITH SWITCH ASSEMBLY



FRONT SURFACE OF
MOUNTING PANEL

MODEL 59 SWITCH & PUSHBUTTON
ASSEMBLY - SHOWN FOR
REFERENCE ONLY.

CODE IDENT NO.
12522

SIZE
A

DRAWING NO.
15077

SHEET
2 OF 2