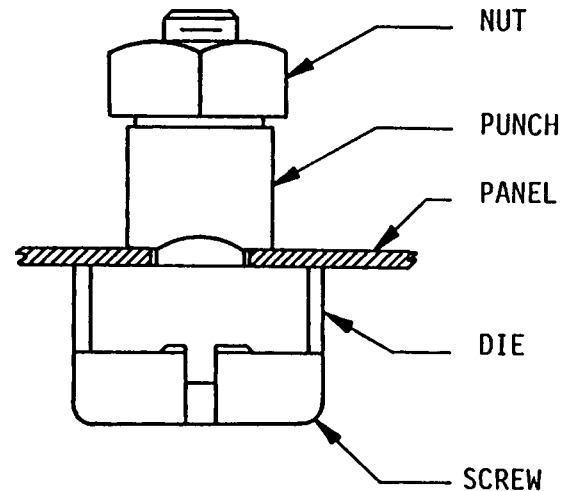


SERIES 40 PANEL PUNCH

THE PANEL PUNCH DESCRIBED HEREIN WILL CUT A 3/4" SQUARE HOLE IN UP TO 16-GAUGE METAL. THE HOLE WILL ACCEPT ANY STACOSWITCH SERIES 40 SWITCH/INDICATOR. THE PUNCH IS OFFERED AS AN INEXPENSIVE MEANS FOR THE DESIGNER/ENGINEER TO FABRICATE PANELS FOR PROTOTYPING.



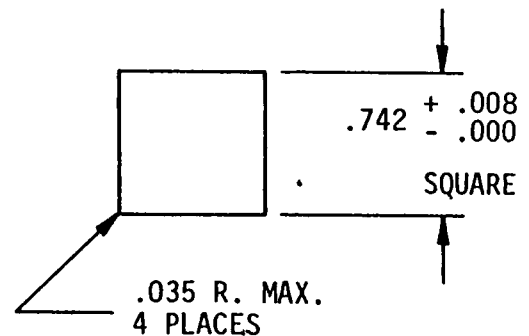
OPERATING INSTRUCTIONS

STEP 1
DRILL OR PUNCH A 1/2" DIA. HOLE THRU PANEL ON CENTER OF INTENDED SQUARE HOLE LOCATION.

STEP 2
INSERT SCREW INTO DIE, OPEN END OF DIE TOWARD THREADS. PLACE DRIVE SCREW IN PANEL HOLE AND SCREW ON PUNCH AND NUT FROM OTHER SIDE.

STEP 3
TURN NUT WITH WRENCH UNTIL METAL IS CUT.

- NOTE:
1. DO NOT OPERATE DRY - LUBRICATE PUNCH AND THREADS.
 2. DEBURRING OF HOLE MAY BE NECESSARY TO INSURE PROPER FIT OF SWITCH/INDICATOR



.PANEL CUT-OUT

AVAILABLE SOURCES:

ALLIED ELECTRONICS PART NUMBER 26 F 1399

STACOSWITCH PART NUMBER 15025