

REVISIONS

REV.	DESCRIPTION	DATE	APPROVAL
1.1	REL PER ER-40571		

Notes: Unless otherwise specified.

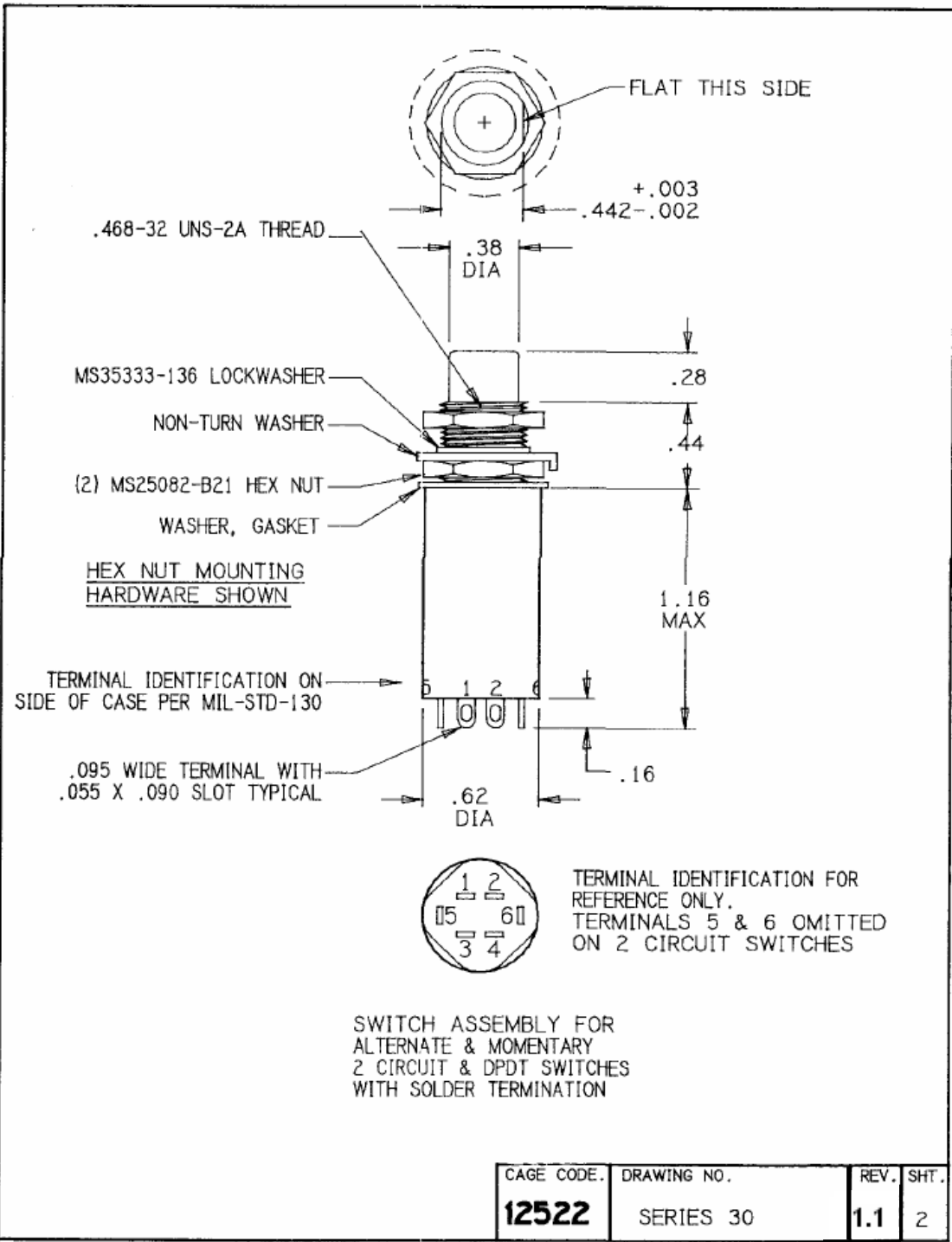
1. Switches with sealed dress rings shall be identified with Stacoswitch/Stacosystems name/logo, part number, code identification, date code and applicable military part number per qualified products list QPL-8805
2. Switches without sealed dress rings or with two hex nuts shall be identified with Stacoswitch/Stacosystems name/logo, part number, code identification, and date code.

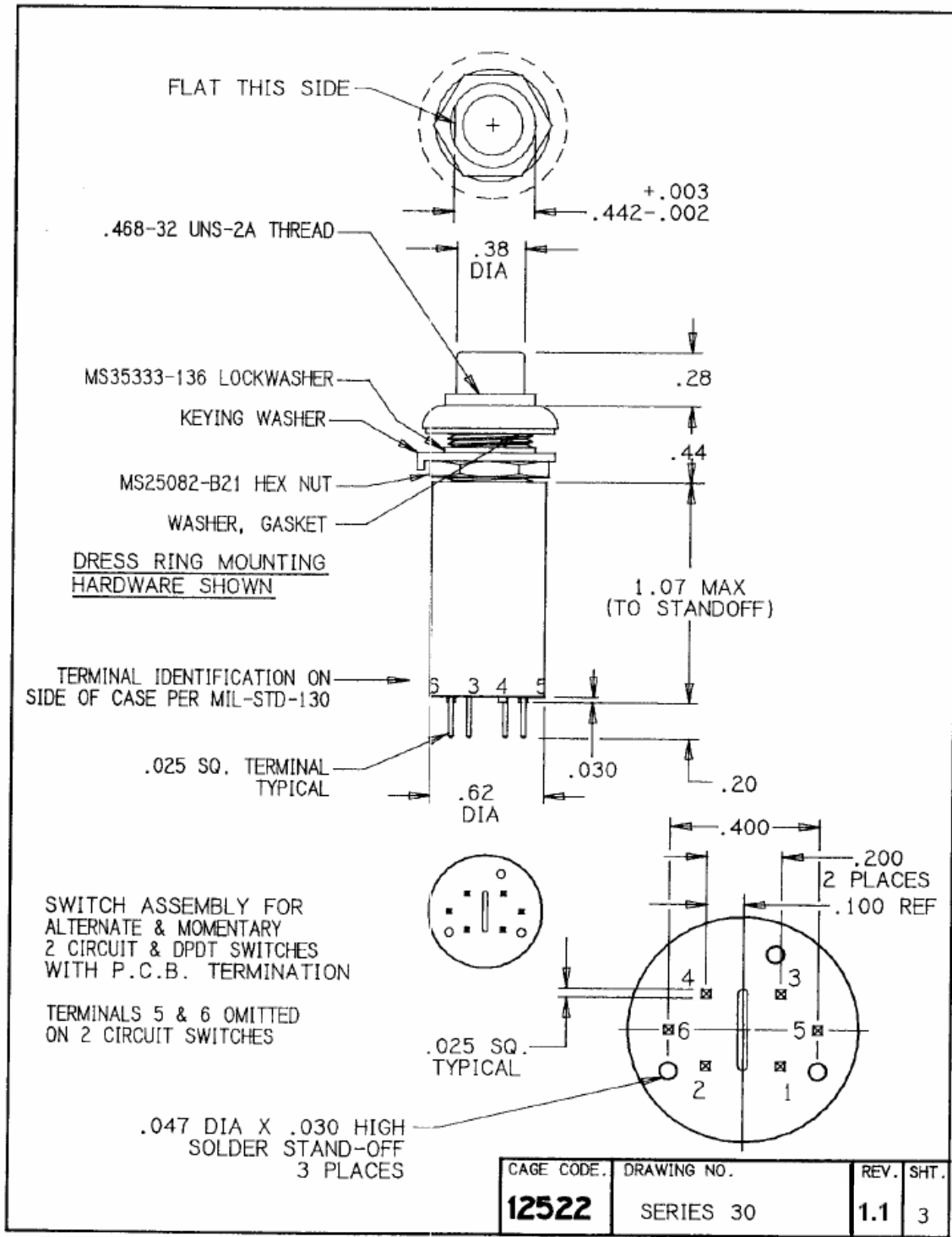
The Information and design disclosed herein was originated by and is the property of STACOSYSTEMS, INC. STACOSYSTEMS, INC. reserves all patent, proprietary, design, manufacturing, reproduction, use and sale rights thereto, and to any article disclosed therein, except to the extent rights are expressly granted to others. The foregoing does not apply to vendor proprietary parts.



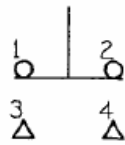
1139 Baker Street, Costa Mesa, CA 92626
 Phone: (714) 549-3041
 Fax: (714) 549-0930

UNLESS OTHERWISE SPECIFIED DIMENSIONS ARE IN INCHES. TOLERANCES ARE: DECIMALS ANGLES .XX ± ± .XXX ±		APPROVALS	DATE	TITLE SWITCH, PUSHBUTTON, ENVIRONMENTALLY SEALED			
MATERIAL N/A		DRAWN Tony Hana	4-17-08				
FINISH N/A		CHECKED		SIZE A	CAGE CODE 12522	DWG NO. SERIES 30	REV 1.1
DO NOT SCALE DRAWING		PROJ. ENG.		SCALE NONE		SHEET 1 OF 9	
		MGMT.					





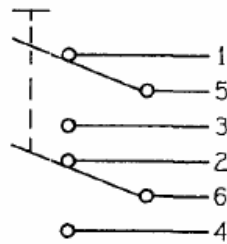
CAGE CODE.	DRAWING NO.	REV.	SHT.
12522	SERIES 30	1.1	3



2 CIRCUIT SWITCH

MOMENTARY ACTION
PN: 30260, 30560

ALTERNATE ACTION
PN: 30259, 30559



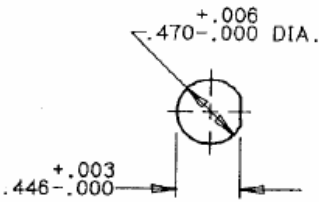
DPDT SWITCH

ALTERNATE ACTION
PN: 30261, 30561

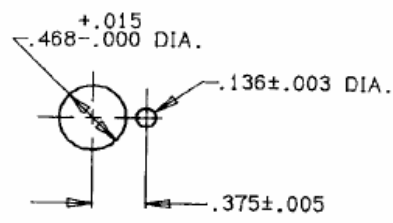
MOMENTARY ACTION
PN: 30262, 30562

CIRCUIT SCHEMATICS

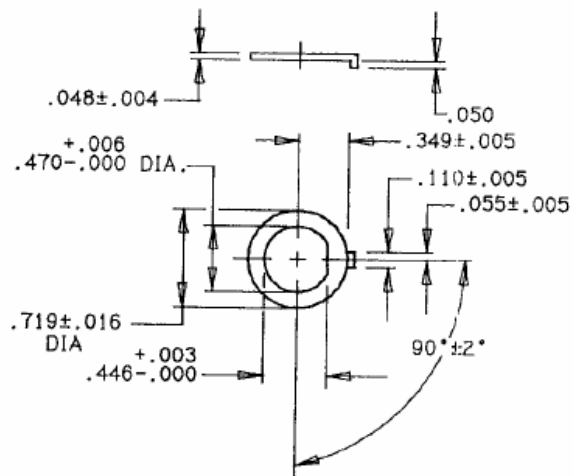
CAGE CODE.	DRAWING NO.	REV.	SHT.
12522	SERIES 30	1.1	4



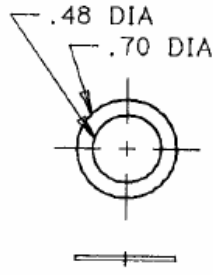
PANEL MOUNTING HOLE



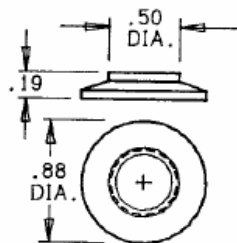
ALTERNATE MOUNTING HOLE FOR NON-TURN WASHER



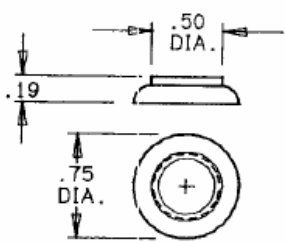
NON-TURN WASHER



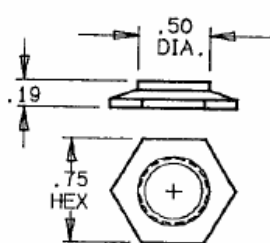
WASHER, GASKET (SILICONE RUBBER)



TYPE "A"

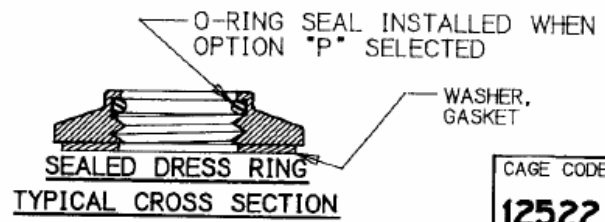


TYPE "B"



TYPE "C"

DRESS RINGS



CAGE CODE.	DRAWING NO.	REV.	SHT.
12522	SERIES 30	1.1	5

SPECIFICATION

1. MECHANICAL:

- 1.1 SWITCH ACTION: ALTERNATE ACTION: PUSH-PUSH, SNAP ACTION.
MOMENTARY ACTION: PUSH-MOMENTARY, SNAP ACTION.
- 1.2 ACTUATING FORCE: 3 TO 6 POUNDS.
- 1.3 PLUNGER TRAVEL: .176 MAX.
- 1.4 MOUNTING THREADS: .468-32 UNS-2A.
- 1.5 MOUNTING HARDWARE: SEE SHEETS 2 AND 3 FOR TYPICAL MOUNTING HARDWARE COMBINATIONS.

2. ELECTRICAL:

2.1 CONTACT LOAD RATING.

LOAD TYPE	SEA LEVEL	70,000 FEET
	28 V DC 115 V AC, 400 Hz	28 V DC
	(AMPERES)	(AMPERES)
RESISTIVE	2.0	2.0
INDUCTIVE	1.5	1.5
LAMP	0.5	0.5

- 2.2 CONTACT MATERIAL SILVER ALLOY, GOLD PLATED
- 2.3 DIELECTRIC STRENGTH SEA LEVEL: 1000 VRMS.
70,000 FEET: 500 VRMS.
- 2.4 INSULATION RESISTANCE 1000 MEGOHMS MIN @ 500 VDC.
- 2.5 LIFE AT RATED LOAD 100,000 CYCLES.

3. ENVIRONMENTAL: (SEALED SWITCH ONLY)

- 3.1 SEAL SPLASHPROOF AND DUSTTIGHT;
MIL-S-8805 ENCLOSURE DESIGN SYMBOLS 6 AND 2.
TESTS PER MIL-STD-108.
- 3.2 TEMPERATURE -55°C TO +85°C.
- 3.3 SHOCK MIL-S-8805, TYPE M, METHOD I; MIL-STD-202,
METHOD 213, TEST CONDITION A (50G).
- 3.4 HIGH IMPACT SHOCK APPLICABLE FOR MOMENTARY ACTION SWITCHES
ONLY: HIGH IMPACT SHOCK, PER MIL-S-8805.
TYPE H, METHOD II; MIL-STD-202, METHOD
207 AND METHOD 310 WITH 39 MILLISECONDS
MAXIMUM SWITCH CONTACT CHATTER.

CAGE CODE.	DRAWING NO.	REV.	SHT.
12522	SERIES 30	1.1	6

SPECIFICATION (CONT.)

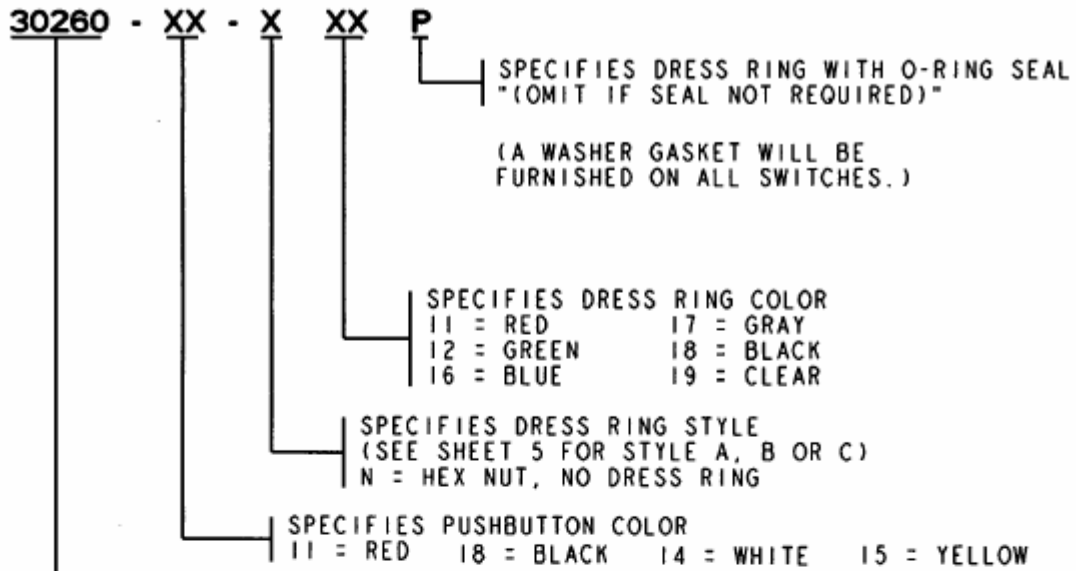
- 3.5 VIBRATION .06 D.A. OR 15G'S, 10 TO 2,000 Hz, PER MIL-STD-202, METHOD 204, TEST CONDITION B.
- 3.6 FUNGUS NONE OF THE MATERIALS OR FINISHES USED IN THE CONSTRUCTION OF THIS SWITCH ASSEMBLY WILL SUPPORT ANY FUNGUS ENCOUNTERED IN TROPICAL CLIMATES.
- 3.7 HUMIDITY 10 DAYS, WITH 10 CYCLES AT 90-98 PERCENT RELATIVE HUMIDITY AT 65°C, PER MIL-STD-202, METHOD 106.
- 3.8 SALT SPRAY 96 HR., PER MIL-STD-202, METHOD 101, TEST CONDITION A.
- 3.9 SAND AND DUST PER MIL-STD-202, METHOD 110, TEST CONDITION B.
- 3.10 EXPLOSION THESE UNITS CAN BE SAFELY OPERATED UNDER LOAD IN AN EXPLOSIVE ATMOSPHERE WITHOUT DANGER OR EXPLOSION PER MIL-STD-202, METHOD 109.

4. MATERIAL:

HOUSING AND DRESS RING, ALUMINUM ALLOY ANODIZED PER MIL-A-8625, HOUSING COLOR BLACK.
BUTTON, HIGH TEMP, THERMOPLASTIC.
WASHER GASKET, SILICONE RUBBER PER ZZ-R-765.

CAGE CODE.	DRAWING NO.	REV.	SHT.
12522	SERIES 30	1.1	7

PART NUMBER CODE



BASIC SWITCH PART NUMBER		
PART NUMBER	SWITCH ACTION	CONTACT ARRANGEMENT
SOLDER TERMINALS		
30259	ALTERNATE	2 CIRCUIT
30260	MOMENTARY	2 CIRCUIT
30261	ALTERNATE	DPDT
30262	MOMENTARY	DPDT
PCB TERMINALS		
30559	ALTERNATE	2 CIRCUIT
30560	MOMENTARY	2 CIRCUIT
30561	ALTERNATE	DPDT
30562	MOMENTARY	DPDT

CAGE CODE.	DRAWING NO.	REV.	SHT.
12522	SERIES 30	1.1	8

Appendix A RoHS (Restriction of certain Hazardous Substance) Compliance requirement per EU Directive 2002/95/EC.

No Lead (Pb), Cadmium (Cd), Mercury (Hg), Hexavalent Chromium (Cr⁺⁶), PBB or PBDE is intentionally added to these devices. Any traces impurities of these substances contained in the parts are below RoHS specified threshold levels:

Substance	RoHS (Max allowed)
Cd (Cadmium)	100ppm or 0.01% by weight
Pb (Lead)	1000ppm or 0.1% by weight
Hg (Mercury)	1000ppm or 0.1% by weight
Cr6+ (Hexavelant Chromium)	1000ppm or 0.1% by weight
PBBs (Polybrominated Biphenyls)	1000ppm or 0.1% by weight
PBDEs (Polybrominated Dipheny Ethers)	1000ppm or 0.1% by weight

Exemptions to the RoHS Directive:

Lead as an alloying element in steel containing up to 0.35 % lead by weight, aluminum containing up to 0.4 % lead by weight and as a copper alloy containing up to 4 % lead by weight.

Note1: Incandescent lamps are not included.

Note2: The product does not contain printed circuit board (PCB).

CAGE CODE 12522	DRAWING NO SERIES 30	REV. 1.1	SHEET 9
--------------------	--------------------------------	-------------	------------