


DWG. NO. MODEL 59 CODED SH 1 REV 1

APPLICATION		REVISIONS			
NEXT ASSY	USED ON	REV.	DESCRIPTION	DATE	APPROVED
-----	SERIES 50	NC	RELEASE PER ER 12169 TYPE V	8.17.79	A.OVERHOLTZ
		A	REVISED PER ER 12840 TYPE II		
		B	REVISED PER ER 13089 TYPE II	9.24.80	A.OVERHOLTZ
		C	REVISED PER ER 13141 TYPE II		
		D	REVISED PER ER 13690 TYPE II	7.22.81	A.OVERHOLTZ
		E	REVISED PER ER 13750 TYPE II	8.6.81	A.OVERHOLTZ
		F	REVISED PER ER 14477 TYPE II	4.14.82	<i>YPA</i>
		G	REVISED PER ER 16766 TYPE II	6-27-84	<i>YPA</i>
		H	REVISED PER ER 17417 TYPE II	1-14-85	<i>RC</i>
		J	REV PER ER-19788	3-6-89	<i>E.O. YPA</i>
		K	REV PER ER-20751	11-20-90	<i>E.O. YPA</i>

NOTES: UNLESS OTHERWISE SPECIFIED

- 1 ALL TERMINAL NUMBERS APPEAR BOTH ON THE SWITCH MODULE HEADER AND ON THE HOUSING RECEPTACLE. SWITCH MODULE AND RECEPTACLE BUILD WITH ONLY THOSE TERMINALS REQUIRED BY NUMBER OF POLES ORDERED.
- 2 UNIT SHALL BE IDENTIFIED WITH STACOSWITCH LOGO, CODE INDENT. NO. 12522, MODEL 59 CODED PART NUMBER, AND DATE CODED.
- 3 UNIT SUPPLIED WITH: ONE (1) #2-56 JACKSCREW FOR SWITCH MODULE INSTALLATION  
ONE (1) #2-56 MOUNTING SCREW AND LOCKWASHER FOR HOUSING INSTALLATION.
- 4 SEE SERIES 50 PUSHBUTTON AND DISPLAY SCREEN SPECIFICATION CONTROL DRAWING. (UP TO 60 KEYED CONFIGURATIONS ARE AVAILABLE. A KEYED PUSHBUTTON WILL MATE ONLY WITH ITS MATCHING KEYED SWITCH MODULE).
- 5 SEE MODEL 50M SWITCH MODULE SPECIFICATION CONTROL DRAWING.
- 6. MATERIALS: HOUSING - ALUMINUM, BLACK ANODIZE OR CHEM. FILM  
MOUNTING BRACKETS - ALUM.,BLK. ANODIZE OR CHEM. FILM & S.S.  
TERMINALS - BERYLLIUM COPPER, GOLD PLATED  
SEAL - SILICONE RUBBER, BLACK
- 7 THE INSTALLATION TORQUE FOR THE MOUNTING SCREW SHALL BE 8 OUNCE-INCHES MAX..
- 8. THE WEIGHT OF THE COMPLETE UNIT, INCLUDING MOUNTING ASSEMBLY, SWITCH MODULE & PUSHBUTTON, SHALL BE .200 LBS. MAX..

**COPY NO.** *1*

UNLESS OTHERWISE SPECIFIED DIMENSIONS ARE IN INCHES TOLERANCES ARE: FRACTIONS DECIMALS, ANGLES = $\sim$ .XX ± .03 ± $\sim$ .XXX ± .010	CUST.: CATALOG STANDARD		 1139 BAKER STREET • COSTA MESA, CALIF. 92626 (714) 549-3041 • TWX. 910/595-1507			
	APPROVALS	DATE				
MATERIAL	DRAWN F.A.O.	8.22.79	SWITCH/INDICATOR, LIGHTED, 2PDT & 4PDT, MOMENTARY & ALTERNATE ACTION, INDIV. MOUNT WITH RECEPTACLE, DRIPPROOF SEAL			
FINISH	CHECKED <i>F.W.</i>	8/22/79	SIZE	FSCM No.	DWG. NO.	REV.
DO NOT SCALE DRAWING	ISSUED <i>Justin Overholtz</i>	8-22-79	<b>A</b>	<b>12522</b>	MODEL 59 CODED	<b>K</b>
	<i>DAN SUGG</i>	8-23-79	SCALE	NONE	-----	SHEET 1 of 6

NOTES (CONTINUED)

9

WHEN HOUSING ASSEMBLY ONLY (59XXXXX ) IS ORDERED, RECEPTACLE SHALL BE SUPPLIED WITH ALL TERMINALS.

10

MOUNTING SLEEVE MAY BE INSTALLED AS SHOWN OR ROTATED 90° TO ACCOMMODATE TOTAL MOUNTING PANEL THICKNESS SHOWN. AS ILLUSTRATED, MOUNTING SLEEVE IS SET UP FOR THINNER PANEL THICKNESS (.062 TO .125).

11

WHEN SPLIT LAMP GROUND UNIT IS MOUNTED IN PANEL WITH PUSHBUTTON, REMOVAL LATCH AT BOTTOM LAMP GROUNDS ARE SPLIT VERTICALLY. FOR HORIZONTAL SPLIT, ROTATE UNIT IN PANEL 90° CLOCKWISE. (LATCH ON LEFT SIDE)



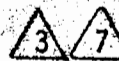
DRAWN	F.A.O.	SIZE	A	FSCM NO.	12522	DWG. NO.	MODEL 59 CODED	REV.	K
ISSUED		SCALE	NONE		-----	SHEET	2		

POSITIVE INDEX FOR PUSHBUTTON

LAMP NUMBERS CORRESPOND WITH TERMINAL NUMBERS (FOR REF. ONLY)

PUSHBUTTON REMOVAL LATCH UNDER THE SEAL

SWITCH MODULE MOUNTING SCREW



1.10 SQ.

PUSHBUTTON/DISPLAY SCREEN ASSEMBLY REF. TO NOTE



.22

.35

GASKET (INCLUDED)

PANEL THICKNESS .062/.250



.13

MOUNTING SLEEVE



2.6

PLUG-IN SWITCH MODULE-SEE NOTE



SCHEMATIC THIS SURFACE

MOUNTING BRACKET

RECEPTACLE FOR PLUG-IN SWITCH MODULE

TERMINAL ENVELOPE SEE SHEET 4 FOR ARRANGEMENT & CONFIGURATION

LOCKWASHER & PANEL MOUNTING SCREW-SEE NOTE



IDENTIFICATION



CODE IDENT NO.

12522

SIZE

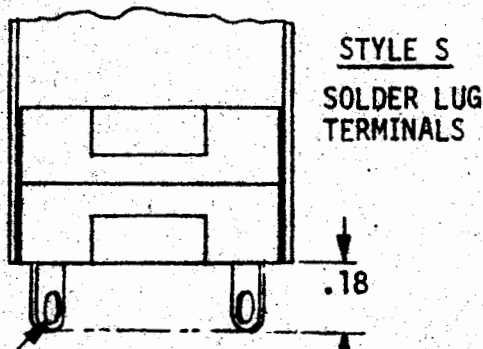
A

DRAWING NO.

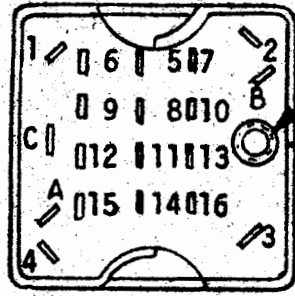
MODEL 59 CODED

SHEET

3

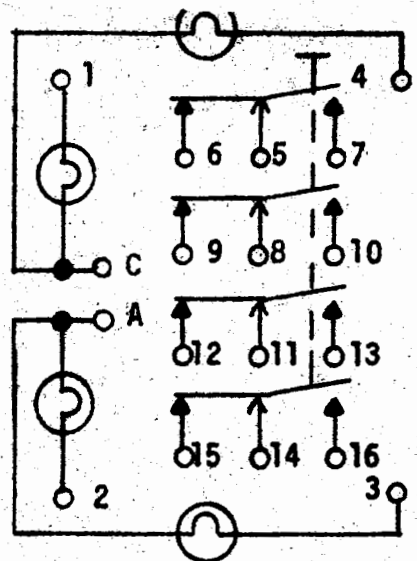
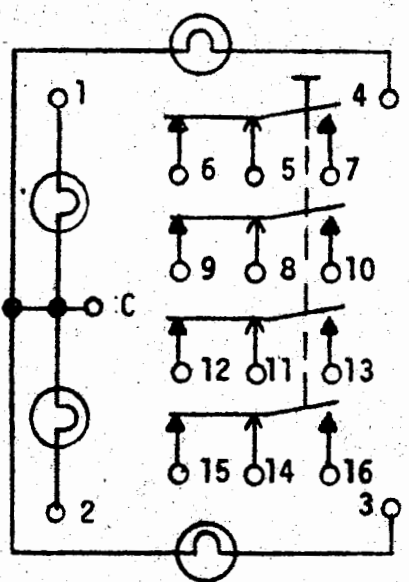


.025 THK. X .070 WIDE TERMINAL WITH  
.035 WIDE X .085 LONG WIRE PASSAGE HOLE



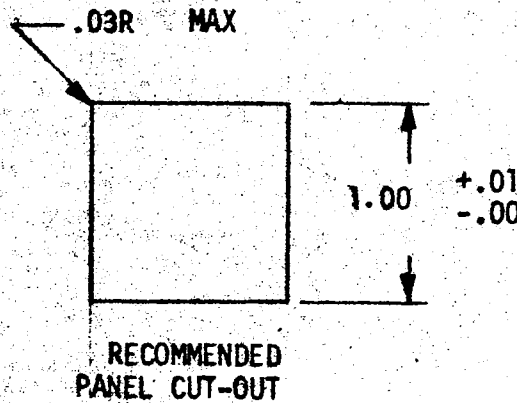
THREADED INSERT FOR SWITCH  
MODULE MTG. SCREW AND FOR  
PANEL MTG. SCREW 3

TERMINAL LOCATION 1 9

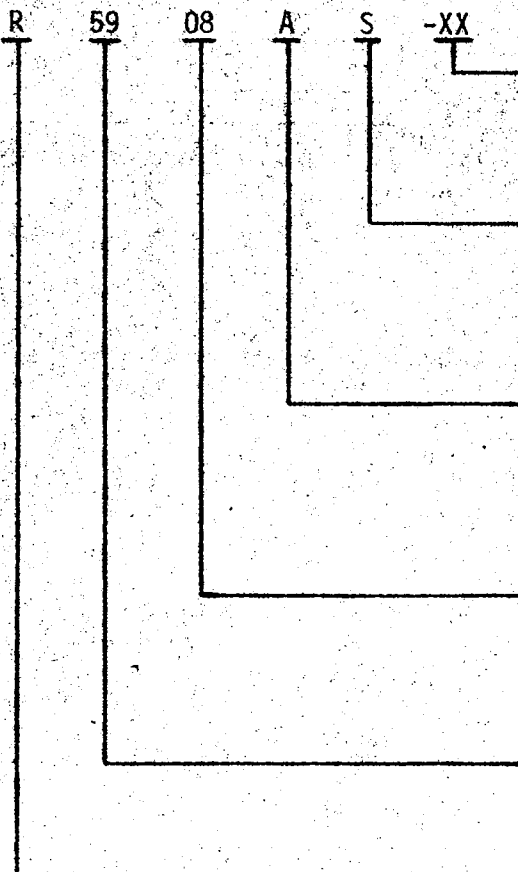


- 08 = 4PDT COMMON-LAMP GROUND (SHOWN)
- 07 = 2PDT COMMON-LAMP GROUND  
DELETE PINS 8 THRU 13
- 00 = INDICATOR COMMON LAMP GROUND  
DELETE PINS 5 THRU 16

- 13 = 4PDT SPLIT-LAMP GROUND (SHOWN)
- 12 = 2PDT SPLIT-LAMP GROUND  
DELETE PINS 8 THRU 13
- 14 = INDICATOR SPLIT-LAMP GROUND  
DELETE PINS 5 THRU 16



PART NUMBER CODING FOR ORDERING MOUNTING ASSEMBLY WITH SWITCH MODEL 50M INSTALLED. (SEE NOTE BELOW)



KEYING (WHEN REQUIRED)  
TWO DIGIT NUMBER (-01 THRU -60) SPECIFYING POSITIVE KEYED HUB. MUST MATCH KEYING NUMBER OF MATING PUSHBUTTON (OMIT FOR NON-KEYED). 4

RECEPTACLE TERMINAL CONFIGURATION (SEE SHEET 3)  
S = SOLDER LUG TYPE

SWITCH OPERATION  
A = MOMENTARY  
B = ALTERNATE ACTION  
I = INDICATOR (NON-SWITCHING, LAMP CIRCUITS ONLY)  
X = NO MODULE (HOUSING ONLY)

CIRCUIT CONFIGURATION  
07 = 2PDT/CLG      12 = 2PDT/SLG  
08 = 4PDT/CLG      13 = 4PDT/SLG  
00 = INDICATOR/CLG      14 = INDICATOR/SLG  
XX = NO MODULE (HOUSING ONLY)

BASIC MODEL NUMBER  
INDIVIDUAL MOUNT WITH RECEPTACLE

R = RFI/EMI (CONDUCTIVE FINISH)  
BLANK = NON-CONDUCTIVE FINISH  
NOTE: UPPER HOUSING = NON-CONDUCTIVE FINISH, TUBE = CONDUCTIVE FINISH, FOR BOTH R.F.I. AND NON-R.F.I. UNITS.

NOTE: DUE TO THE NUMBER OF VARIABLE FEATURES OFFERED, THE PUSHBUTTON/DISPLAY SCREEN MUST BE ORDERED SEPARATELY. REFER TO SERIES 50 SPECIFICATION CONTROL DRAWING FOR ORDERING INFORMATION. 4

CLG = COMMON LAMP GROUND  
SLG = SPLIT LAMP GROUND

CODE IDENT NO.	SIZE	DRAWING NO.	SHEET
12522	A	MODEL 59 CODED	5

SPECIFICATIONS, MODEL 59 SWITCH/INDICATOR MODULE

THE SWITCHES DEFINED BY THIS SPECIFICATION CONTROL DRAWING MEET OR EXCEED ALL REQUIREMENTS OF MIL-S-22885.

1. ELECTRICAL:

A. DIELECTRIC STRENGTH

SEA LEVEL  
70,000 FEET

1000 VRMS  
450 VRMS

B. INSULATION RESISTANCE

1,000 MEGOHMS @ 500 VDC

2. ENVIRONMENTAL:

A. TEMPERATURE, OPERATING

-65°C TO +85°C

B. THERMAL SHOCK

-55°C TO +85°C, PER MIL-STD-202, METHOD 107  
TEST CONDITION A

C. ALTITUDE

SEA LEVEL TO 70,000 FEET

D. VIBRATION

.06 D.A. OR 15 G'S; 10 TO 2,000 Hz; PER  
MIL-STD-202, METHOD 204, TEST CONDITION B

E. SHOCK

75 G'S  $6 \pm 1$  MILLISECOND: PER MIL-STD-202,  
METHOD 213, TEST CONDITION B AND HI-IMPACT  
SHOCK PER MIL-S-901C.

F. SAND AND DUST

PER MIL-STD-202, METHOD 110, TEST CONDITION B

G. HUMIDITY

10 DAYS, WITH 10 CYCLES AT 90-98 PERCENT  
RELATIVE HUMIDITY AT 65°C PER MIL-STD-202,  
METHOD 106.

H. SALT SPRAY

96 HRS., PER MIL-STD-202, METHOD 101, TEST  
CONDITION A: WITH PUSHBUTTON INSTALLED.

I. FUNGUS

NONE OF THE MATERIALS OR FINISHES USED IN THE  
CONSTRUCTION OF THIS SWITCH ASSEMBLY WILL  
SUPPORT ANY FUNGUS ENCOUNTERED IN TROPICAL  
CLIMATES.

J. DRIPPROOF/SPLASHPROOF

MEETS DRIPPROOF/SPLASHPROOF REQUIREMENTS  
OF MIL-S-22885; REF: DRIPPROOF TEST PER  
MIL-S-108 WITH SWITCH/INDICATOR MODULE  
AND PUSHBUTTON INSTALLED.

CODE IDENT NO	DRAWING NO.	REV.	SHT.
12522	MODEL 59 CODED	K	6