

SPECIFICATION CONTROL DRAWING	LTR	REVISION	DATE	APPROVAL
	E	REV REDRAWN ER 9315 TY I	10/30/75	<i>J</i>
	F	REVISED PER ER 9961 TY I	4/30/76	<i>W</i>
	G	REV PER ER 12782 TY I		

1. INDICATOR HOUSING DOES NOT INCLUDE DISPLAY LENS, IT IS NECESSARY TO ORDER LENS SEPARATELY.

INDICATOR HOUSING ACCEPTS THE FOLLOWING LENSES:

STANDARD CATALOG SERIES 60 PUSHBUTTON

SCREW - IN 60A1 THRU 60G1	SNAP - IN 60A2 THRU 60G2 60A3 THRU 60G3
ALSO	
MIL-S-22885/22	MIL-S-22885/19

FOR RFI PUSHBUTTONS REFER TO R60 RFI PUSHBUTTON SCD


2. TERMINAL IDENTIFICATION:

#1 - LAMP SHELL THIRD TERMINAL = ISOLATED TERMINAL (-3 UNITS ONLY) (NOT IDENTIFIED)

#2 - CENTER CONTACT

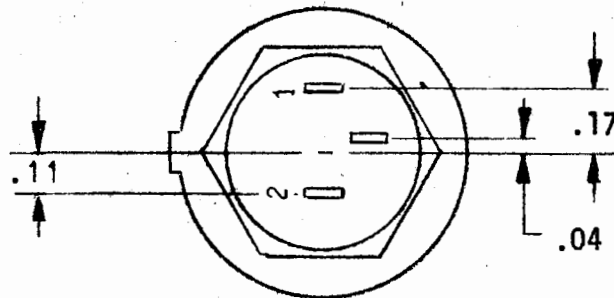
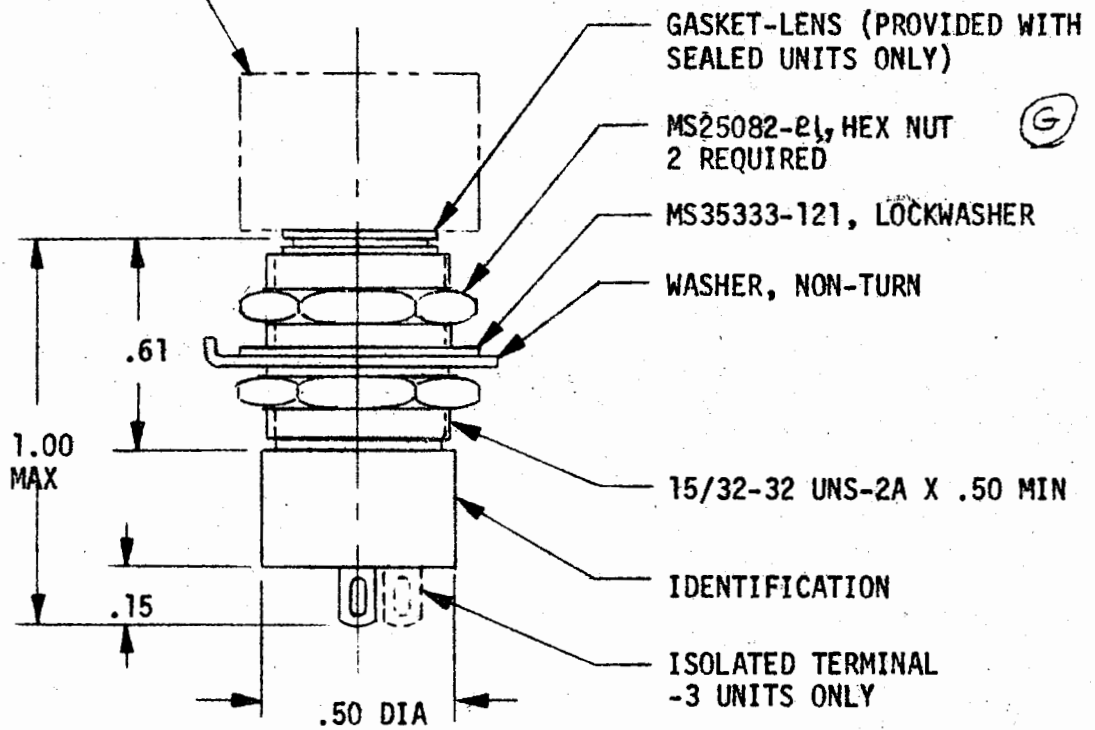
- 3. UNIT TO BE IDENTIFIED WITH STACOSWITCH PART NUMBER AND DATE CODE.
- 4. MOUNTING HARDWARE SHOWN ON SHEET 2 IS FURNISHED WITH INDICATOR HOUSING.
- 5. FINISH: NON-RFI SHIELDED UNITS: BLACK ANODIZE PER MIL-A-8625
RFI SHIELDED UNITS: CHEM FILM PER MIL-C-5541, CLASS 3, COLOR MAY VARY FROM CLEAR TO GOLDEN

COPY NO. - 13

UNLESS OTHERWISE SPECIFIED DIMENSIONS ARE IN INCHES	PREPARED	DATE	 STACOSWITCH STACO, INC. • CALIFORNIA			
	NITA NORFOLK	10/30/75				
	TOLERANCES	CHECKED	DATE	TITLE		
.XX ± .03	<i>[Signature]</i>	10/31/75	HOUSING, INDICATOR SINGLE LAMP			
.XXX ± .010	ENGINEER	DATE	APPROVED			
ANGLE ± ----	<i>C Lester</i>	10-31-75	DATE			
CUSTOMER	APPROVED	DATE	CODE IDENT NO.	SIZE	DRAWING NO.	REV.
CATALOG STANDARD	<i>[Signature]</i>	10/31/75	12522	A	MODEL 61-62 CODED & MODEL R61-R62 CODED	G
IN/DRAWING	PROD. MGR.	DATE	SCALE	UNIT WEIGHT	SHEET 1 OF 4	
1/2			1/1			

MODEL 61-62 & R61-R62 CODED

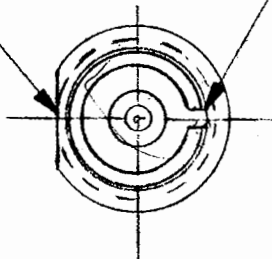
LENS SHOWN FOR REFERENCE ONLY. ACCEPTS T-1 3/4 MIDGET FLANGE BASE LAMP



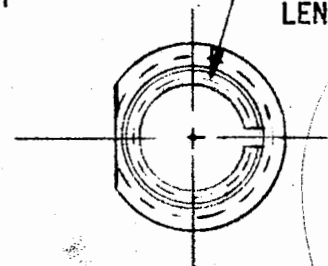
MOUNTING BUSHING FLAT

SNAP-IN LENS ANTIROTATION INDEX SLOT IN LINE WITH FLAT $\pm 2^\circ$

5/16-32-UNEF-2B FOR SCREW IN LENS

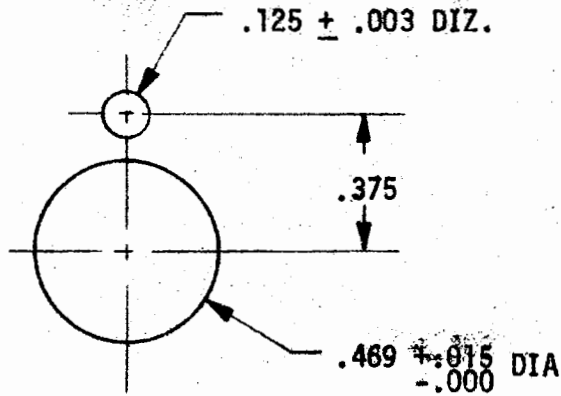


TOP VIEW OF MODEL 62

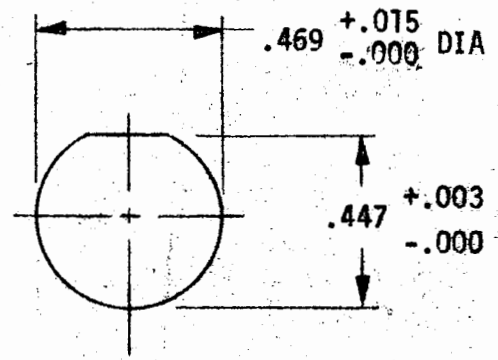


TOP VIEW OF MODEL 61

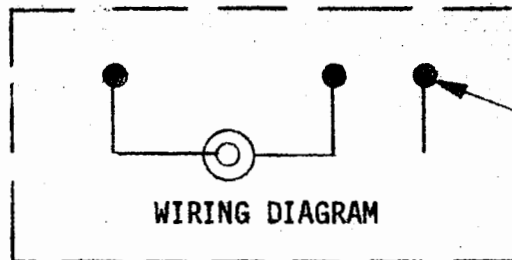
CODE IDENT NO. 12522	SIZE A	DRAWING NO. MODEL R61-R62 CODED MODEL 61-62 CODED	SHEET 2 OF 4
--------------------------------	------------------	---	-----------------



RECOMMENDED PANEL MOUNTING HOLE



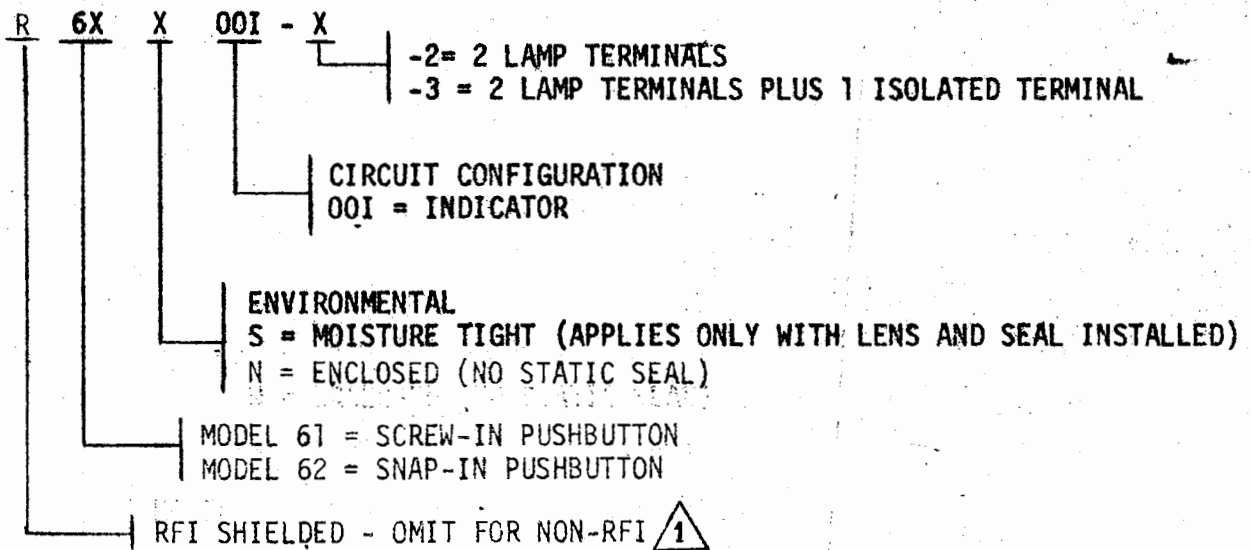
ALTERNATE MOUNTING HOLE



WIRING DIAGRAM

ISOLATED TERMINAL (NOT IDENTIFIED) -3 CONFIGURATION ONLY

PART NUMBER CODE



CODE IDENT NO. 12522	SIZE A	DRAWING NO. MODEL R61-R62 CODED MODEL 61-62 CODED	SHEET 3 OF 4
--------------------------------	------------------	---	-----------------

SPECIFICATIONS FOR MODEL 61-62

1. MECHANICAL

- A. CONTACT SPRING PRESSURE 12 TO 36 OZ. (REF. PARA. 3.5.8*)
- B. SCREW THREADS PER HANDBOOK H28
- C. STRENGTH WHEN MOUNTED IN A PANEL WITH LENS INSTALLED, THE INDICATOR SHALL BE CAPABLE OF WITHSTANDING AN AXIAL LOAD OF 25 LBS. APPLIED AT THE CENTER OF THE LENS.

2. ELECTRICAL

- A. DIELECTRIC 1000 VRMS (REF. PARA. 4.7.2.1*)
- B. LIFE 1000 HRS. (REF. PARA. 4.7.13*)

3. ENVIRONMENTAL

- A. SALT SPRAY PER MIL-STD-202, METHOD 101, TEST CONDITION A (96 HRS.) WITH LENS & SEAL INSTALLED. (REF. PARA. 4.7.12*)
- B. HUMIDITY PER MIL-STD-202, METHOD 106 (REF. PARA. 4.7.18*) WITH LENS & SEAL INSTALLED.
- C. VIBRATION PER MIL-STD-202, METHOD 204, TEST CONDITION A (.08 D.A. or 10 G'S WHICHEVER IS LESS, 10 TO 500 HZ) (REF. PARA. 4.7.16*)
- D. SHOCK PER MIL-STD-202, METHOD 213, TEST CONDITION I (100 G'S, 6 MILLISECONDS) (REF. PARA. 4.7.17.1)
- E. SAND & DUST PER MIL-STD-202, METHOD 110, TEST CONDITION A (REF. PARA. 4.7.6) WITH LENS & SEAL INSTALLED.
- F. TEMPERATURE PER MIL-STD-202, METHOD 102, -55° +0° TO +85° +3° (REF. PARA 4.7.5*)
-3° -0°

* ALL PARAGRAPHS NOTED REFER TO MIL-L-3661. MODEL 61-62 IS DESIGNED TO MEET OR EXCEED ALL APPLICABLE REQUIREMENTS OF MIL-L-3661..