


SPECIFICATION CONTROL DRAWING		LTR	REVISION	DATE	APPROVAL
		P	REV. & REDRAWN ER 9311 TYI	10/31/75	<i>[Signature]</i>
		R	REVISED PER ER 9856-TYPE I	7-19-76	<i>[Signature]</i>
		S	REVISED PER ER 9961-TYPE I	9-30-76	<i>[Signature]</i>
		T	REVISED PER ER 10067 TYPE I	12-16-76	<i>[Signature]</i>
		U	REVISED PER ER 11312 type I	7-28-78	<i>[Signature]</i>
		V	REV PER ER 17976 TYPE I	11/18/85	<i>[Signature]</i>
		W	REV PER ER-01-31146	4-10-95	<i>[Signature]</i>

NOTES: UNLESS OTHERWISE SPECIFIED.

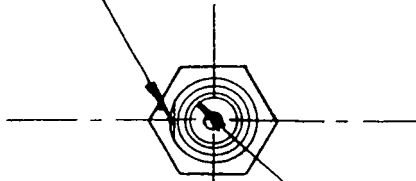
1. UNIT SHALL BE IDENTIFIED WITH: STACOSWITCH, PART NUMBER, DATE CODE, MIL NUMBER M22885/18-XX, AND STACO CODE IDENT 12522.
2. FOR DETAILS OF SINGLE LAMP LENS, SEE SERIES 60 SCD. FOR RFI SHIELDED PUSHBUTTONS SEE R60 RFI PUSHBUTTON SCD.
3. FOR PANEL DRESS RINGS DETAILS, SEE SCD 15024.
4. WEIGHT OF .039 LB. DOES NOT INCLUDE LAMP OR LENS.
5. MATERIALS:

INSULATOR BODY: DIALLYL PHTHALATE, COLOR: BLUE	}	NON-RFI SHIELDED UNITS ONLY
HOUSING: ALUMINUM, BLACK ANODIZE PER MIL-A-8625		
TERMINALS: SILVER ALLOY, GOLD PLATED		
INSULATOR BODY: DIALLYL PHTHALATE, COLOR: BLUE	}	RFI SHIELDED UNITS ONLY
HOUSING: ALUMINUM, CHEMICAL FILM PER MIL-C-5541, CL 3, (COLOR MAY VARY FROM CLEAR TO GOLDEN)		
TERMINALS: CONSIL, GOLD PLATE		
6. TERMINAL IDENTIFICATION FOR 2PDT PLUS LAMP. TERMINALS 5 AND 6 OMITTED FOR 2 CIRCUIT SWITCH.
7. RECOMMENDED MOUNTING TORQUE IS 15 INCH-POUNDS MAXIMUM.

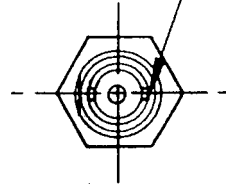
Model 65 & 66 Coded
Model R65 & R66 Coded
W

UNLESS OTHERWISE SPECIFIED DIMENSIONS ARE IN INCHES	PREPARED NITA NORFOLK 10/31/75	 STACOSWITCH STACO, INC. • DANVERS	
TOLERANCES FRACTIONS .03 DECIMALS .010 ANGLES ---	CHECKED <i>W. Nix</i> 11/13/75	SWITCH ASSEMBLY, 2 PDT - FOR USE WITH SINGLE LAMP LENS	
CUSTOMER Catalog Standard	DATE <i>[Signature]</i> 11/12/75	CAGE INVENT NO. 12522	REV. A
	DATE <i>[Signature]</i> 11/13/75	DRAWING NO. MODEL 65 & 66 CODED AND MODEL R65 & R66 CODED	
		SCALE 1/1	REV. W
		SHEET 1 of 5	

FLAT "D" CONFIG. (TYP.)
SEE SHEET 4 OF 5 FOR
PANEL CUTOUT RECOMMENDATIONS.



ORIENTATION
SLOT FOR PUSH
BUTTON WITH
SNAP-IN LAMP-
BASE IN LINE
WITH FLAT ±2°



5/16-32 NEF-2B THD

SINGLE LAMP LENS TO BE
ORDERED SEPARATELY \triangle

.50 REF.
"O-RING"
SEALED UNIT ONLY

"BOOT SEAL".
WHEN SEALED
UNIT IS REQ'D

15/32-32 UNEF-2B

.70

.060 - .250
PANEL (TYP)

1.41

2.12 REF.

MANUFACTURER'S
NAME PLATE
LOCATION

NON-TURN
WASHER

LOCK-WASHER
MS35333-136



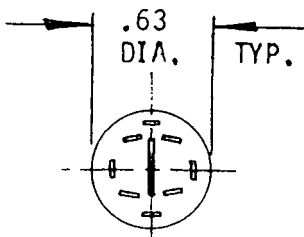
TERMINAL
IDENTIFICATION \triangle



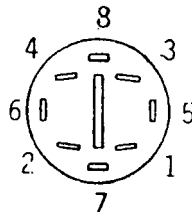
HEX NUT
MS25082-B21

MODEL 65 (SCREW-IN)

MODEL 66 (SNAP-IN)



TERMINAL ARRANGEMENT
FOR: 07 (DOUBLE POLE)



TERMINAL
NUMBERING

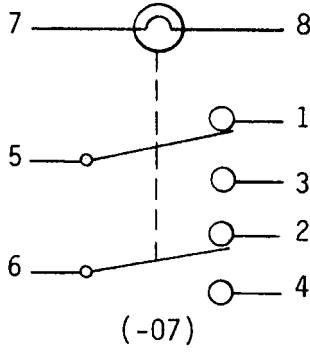
BUSS (BETWEEN TERMINALS 1 & 3) \rightarrow



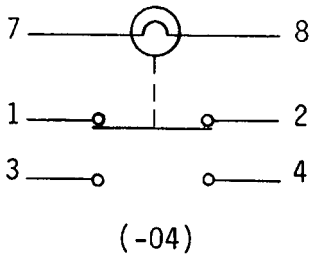
TERMINAL ARRANGEMENT
FOR: 03 (SPDT)

TERMINAL ARRANGEMENT
FOR: 04 (2-CIRCUIT)

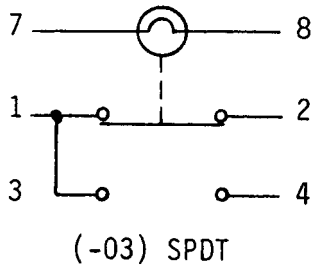
CIRCUIT - SCHEMATICS



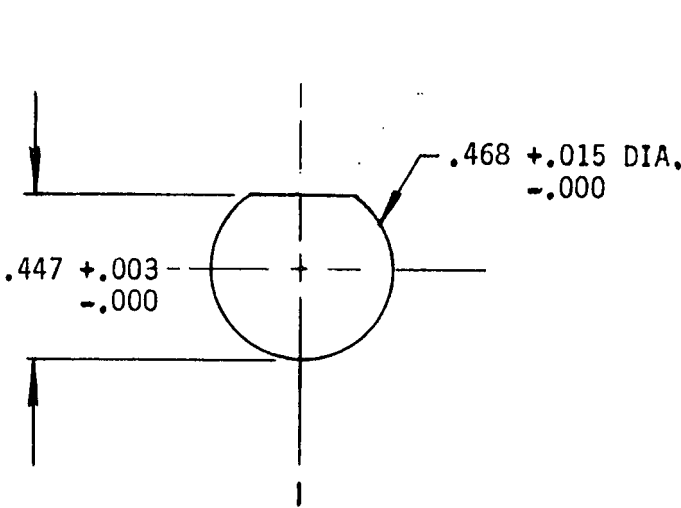
DOUBLE POLE



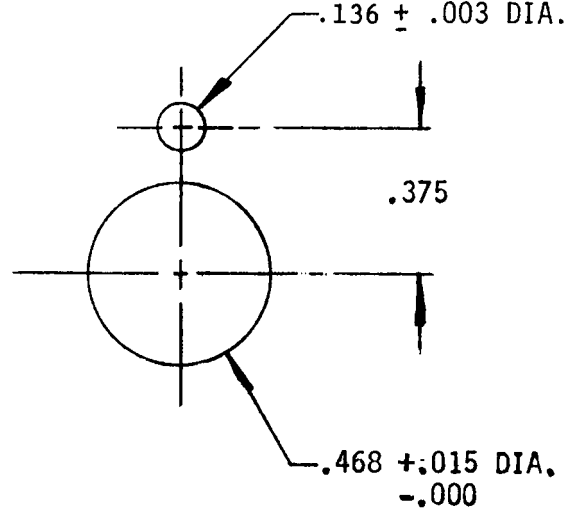
TWO CIRCUIT



CODE IDENT NO. 12522	SIZE A	DRAWING NO. MODEL R65 & R66 CODED Model 65 & 66 CODED	SHEET 3 OF 5
--------------------------------	------------------	---	-----------------



15/32-32 "D" FLAT MTG. HOLE



NOT RECOMMENDED FOR
"SEALED" UNITS

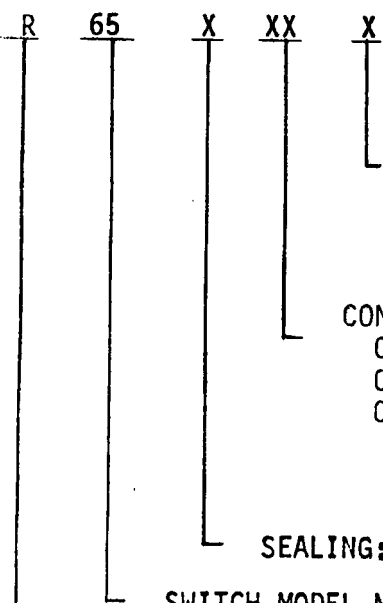
NON-TURN WASHER MTG. HOLE

RECOMMENDED PANEL MOUNTING HOLES (2 X SIZE)



STACO P/N	MIL NO.
65S07A	M22885/18-01
65S07B	M22885/18-02
65S04A	M22885/18-03
65S04B	M22885/18-04
66S07A	M22885/18-05
66S07B	M22885/18-06
66S04A	M22885/18-07
66S04B	M22885/18-08

PART NUMBER CODE



A = MOMENTARY ACTION
B = ALTERNATE ACTION

CONTACT ARRANGEMENT:
03 = SINGLE POLE - DOUBLE THROW
04 = TWO CIRCUIT
07 = DOUBLE POLE - DOUBLE THROW

SEALING: S = SEALED; N = NON-SEALED

SWITCH MODEL NUMBER:
65: 15/32-32 MOUNTING HUB, SCREW-IN LENS, .750 MOUNTING CENTERS
66: 15/32-32 MOUNTING HUB, SNAP-IN LENS, .750 MOUNTING CENTERS

RFI SHIELDED (OMIT FOR NON-RFI)

SPECIFICATIONS

1. MECHANICAL:

- A. OPERATING FORCE 2 LBS. ± 1 LB.
- B. PLUNGER TRAVEL .160 MAX.
- C. MECHANICAL LIFE 10⁶ CYCLES

2. ELECTRICAL:

- A. CONTACT LOAD RATING 28 VDC/115 VAC
 - RESISTIVE 2.0 AMP
 - INDUCTIVE 1.5 AMP
 - LAMP 0.5 AMP
 - DRY CIRCUIT 10 MICROAMP, DC ONLY
- B. DIELECTRIC STRENGTH SEA LEVEL 1000 VAC
- C. INSULATION RESISTANCE 1000 MEGOHMS MIN @ 500 VDC.
- D. LIFE AT RATED LOAD 50,000 CYCLES.
- E. TERMINAL NO. 8 IS COMMON WITH PLUNGER SHELL.

3. ENVIRONMENTAL:

- A. TEMPERATURE, OPERATING -55°C TO +85°C
- B. SHOCK 50 g's, 11 ± 1 MILLISECOND; PER MIL-STD-202, METHOD 202.
- C. VIBRATION .06 D.A. OR 15 g's, 10 TO 2,000 Hz, PER MIL-STD-202, METHOD 204, TEST CONDITION B.
- D. FUNGUS NONE OF THE MATERIALS OR FINISHES USED IN THE CONSTRUCTION OF THIS SWITCH ASSEMBLY WILL SUPPORT ANY FUNGUS ENCOUNTERED IN TROPICAL CLIMATES.
- E. HUMIDITY 10 DAYS, WITH 10 CYCLES AT 90-98 PERCENT RELATIVE HUMIDITY AT 65°C, PER MIL-STD-202, METHOD 106. (APPLICABLE TO SEALED UNIT ONLY).
- F. SALT SPRAY 48 HR., PER MIL-STD-202, METHOD 101, TEST CONDITION B, WITH PUSH BUTTON LENS INSTALLED.