

	NAME	DATE
ORIGINATOR	R. KWAN	09/27/11

TECHNICAL BULLETIN – TB-218
IN-FIELD REPAIR PROCEDURE FOR 92P0367-TAB

TB-218

1.1

The Information and design disclosed herein was originated by and is the property of STACO SYSTEMS, INC. STACO SYSTEMS, INC. reserves all patent, proprietary, design, manufacturing, reproduction, use and sale rights thereto, and to any article disclosed therein, except to the rights that are expressly granted to others. The foregoing does not apply to vendor proprietary parts. ©Copyright Staco Systems, Inc. 2011.

PART NO.

TB-218

SHEET 1 of 8

PURPOSE:

THE PURPOSE OF THIS DOCUMENT IS TO DEFINE THE IN-FIELD REPAIR PROCESS FOR PUSHBUTTONS IN 92P0367-TAB.

CUSTOMER: IAI

STEP BY STEP PROCEDURE FOR IN-FIELD REPAIR OF PUSHBUTTONS IN 92P0367-TAB:

1. MATERIALS REQUIRED:

- a. PUSHBUTTON EXTRACTION TOOL
- b. TWEEZERS
- c. MOLYKOTE 33 GREASE
- d. Q-TIP
- e. CORRECTION FILTERS (FULL SCREEN CONFIGURATION DISPLAYED, SAME PROCESS IS FOLLOWED FOR HALF AND QUARTER SCREEN CONFIGURATIONS)
 - i. NOTE: **201776-TAB** (WHITE CORRECTION FILTER) IS USED FOR **RED** ONLY.
 - ii. **201777-TAB** (BLUE CORRECTION FILTER) IS USED FOR **GREEN, LUNAR WHITE AND LEMON YELLOW.**
- f. REPLACEMENT BEZEL (IF REQUIRED)
- g. DIFFUSER

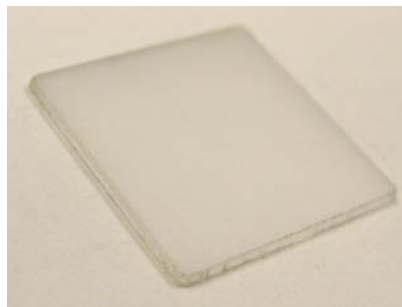


FIGURE 1

CAGE CODE	PART NO.	REV.	SHT.
12522	TB-218	1.1	3

2. USING THE PUSHBUTTON EXTRACTION TOOL, ENGAGE EACH END TO THE PUSHBUTTON BEZEL ABOVE THE LAMPBOX TABS AND REMOVE THE PUSHBUTTON FROM THE SWITCH.

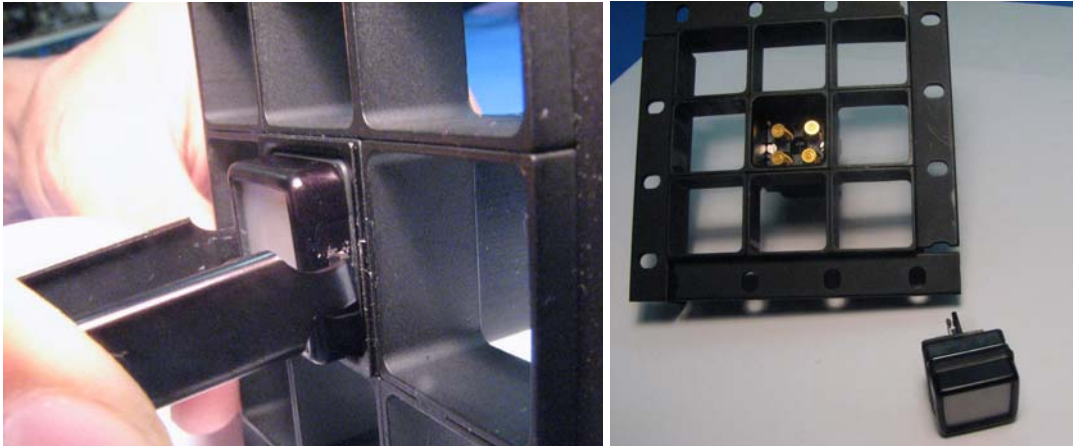


FIGURE 2

3. CAREFULLY REMOVE THE OUTER LENS SEAL FROM THE PUSHBUTTON AND DO NOT OVERSTRETCH THE SEAL.

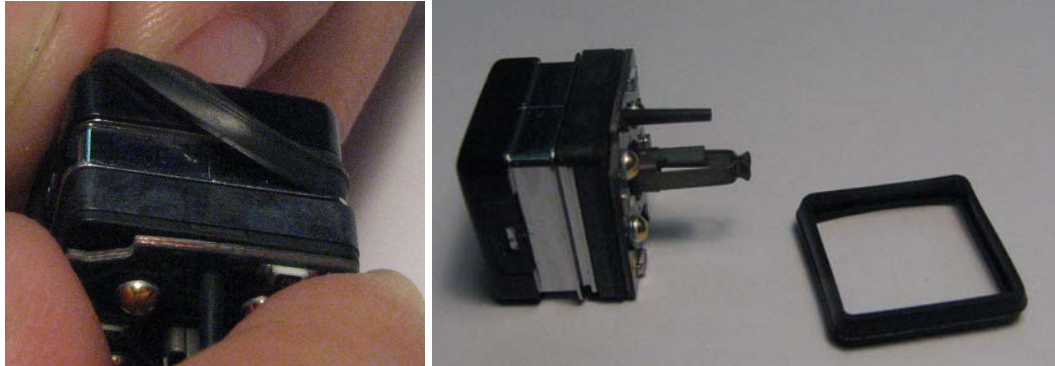


FIGURE 3

4. USING TWEEZERS, PUSH BEZEL SECTION OUT AWAY FROM THE LAMPBOX AS SHOWN IN FIGURE 4. REPEAT FOR OTHER SIDE AND REMOVE BEZEL FROM LAMPBOX.



FIGURE 4

CAGE CODE	PART NO.	REV.	SHT.
12522	TB-218	1.1	4

5. USING THE CORRECTION FILTER PROVIDED, PLACE **FILM SIDE DOWN** INTO LAMPBOX. PUSH DOWN WITH END OF Q-TIP UNTIL PART BOTTOMS OUT ALL AROUND.



FIGURE 5

- 5.5. INSERT DIFFUSER ON TOP OF CORRECTION FILTER REGARDLESS OF ORIENTATION AND PUSH DOWN WITH END OF Q-TIP UNTIL PART BOTTOMS OUT ALL AROUND.

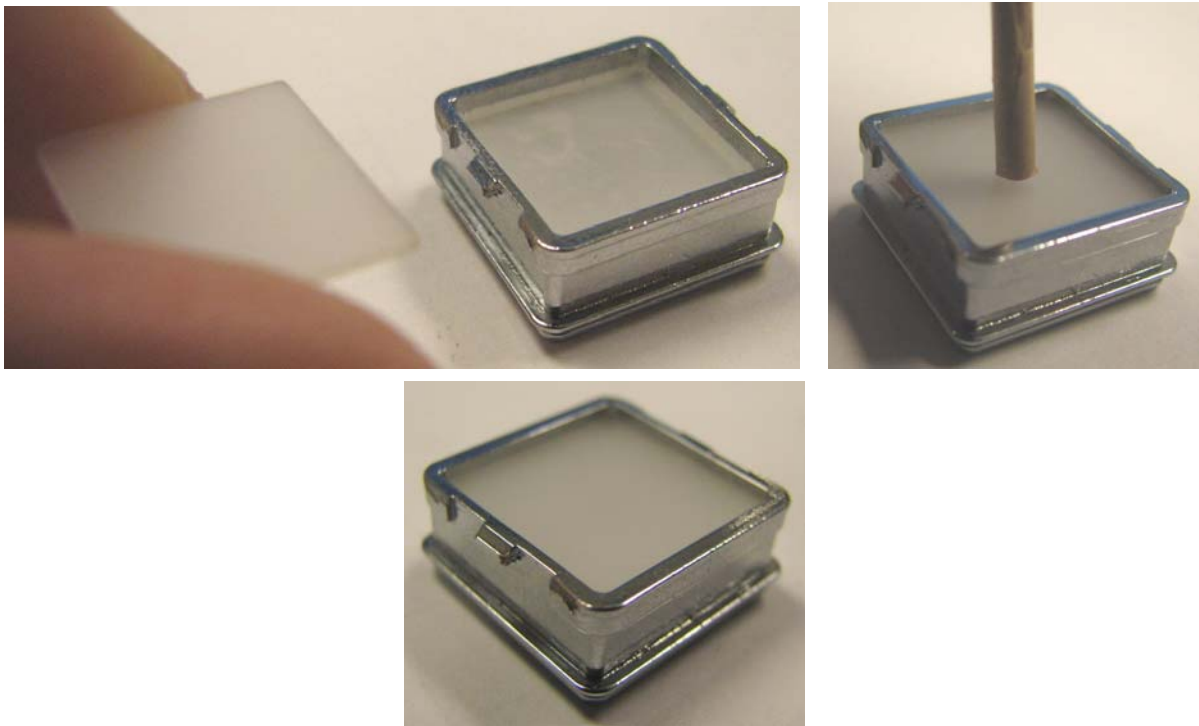


FIGURE 5.5

CAGE CODE
12522

PART NO.

TB-218

REV.
1.1

SHT.
5

6. PLACE BEZEL AND LENS FILTER BACK ONTO LAMPBOX. ENSURE BOTH SLOTS HAVE THE LAMPBOX TAB PROTRUDING OUT.

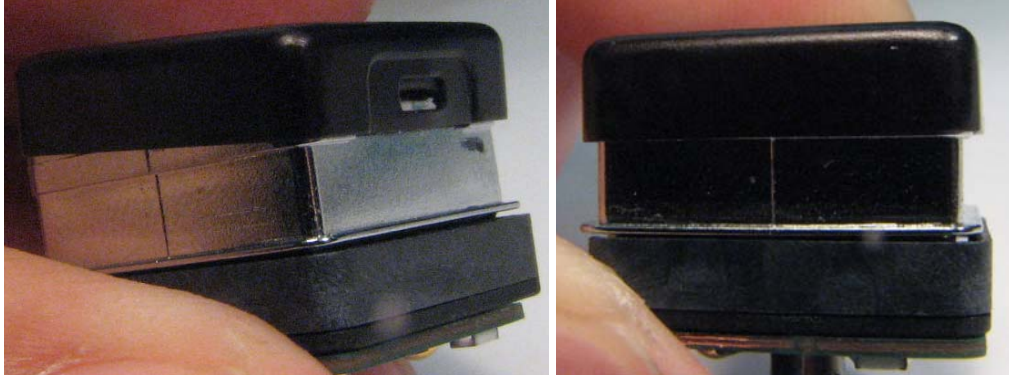


FIGURE 6

7. USING TWEEZERS, PRESS DOWN ON THE BEZEL BELOW THE TABS TO PREVENT BEZEL FROM FALLING OFF. REPEAT ON OPPOSITE SIDE.

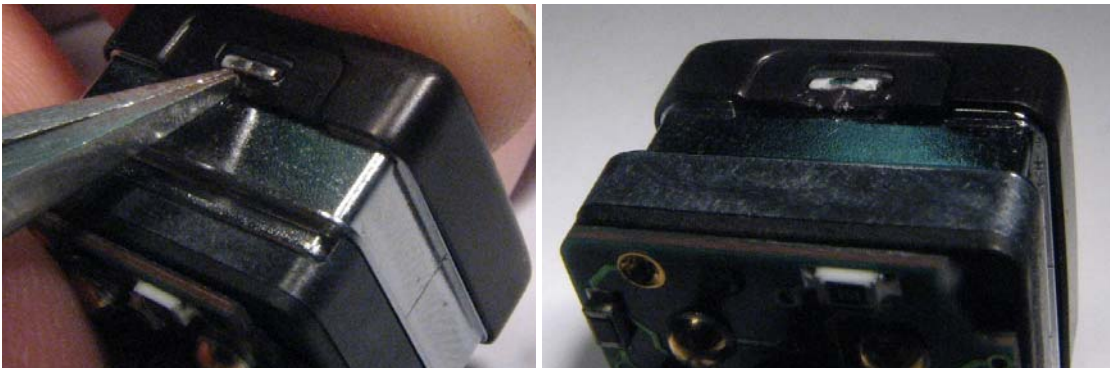


FIGURE 7

8. PLACE OUTER LENS SEAL AROUND THE LAMPBOX WITHOUT OVERSTRETCHING THE SEAL.



FIGURE 8

CAGE CODE	PART NO.	REV.	SHT.
12522	TB-218	1.1	6

9. INSTALL PUSHBUTTON BACK INTO SWITCH, NOTING THE CORRECT ORIENTATION.



FIGURE 9

CAGE CODE	PART NO.	REV.	SHT.
12522	TB-218	1.1	7

IF THE BEZEL BREAKS:

1. PRESS OUT THE LENS FILTER FROM THE OLD BEZEL WITH THE END OF THE Q-TIP.

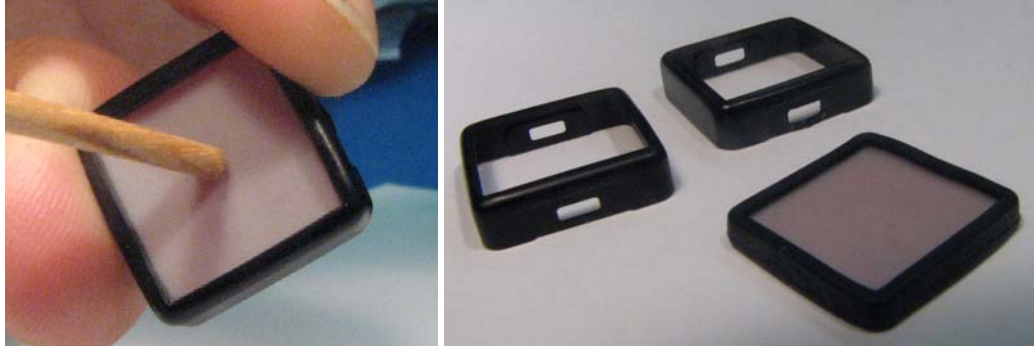


FIGURE 1

2. RUB A SMALL AMOUNT OF MOLYKOTE 33 GREASE WITH A Q-TIP AND EVENLY SPREAD AROUND THE INNER SIDES OF THE NEW REPLACEMENT BEZEL.



FIGURE 2

3. PUT THE LENS FILTER WITH FILTER SEAL INTO THE GREASED BEZEL BY SLIPPING IN ONE SIDE AND SLOWLY EASING THE OTHER SIDE FLUSH (SEAL SHOULD NOT BE DRAGGING). USING A PAIR OF TWEEZERS TO GENTLY OPEN THE OTHER SIDE WILL HELP PLACE THE SEAL.

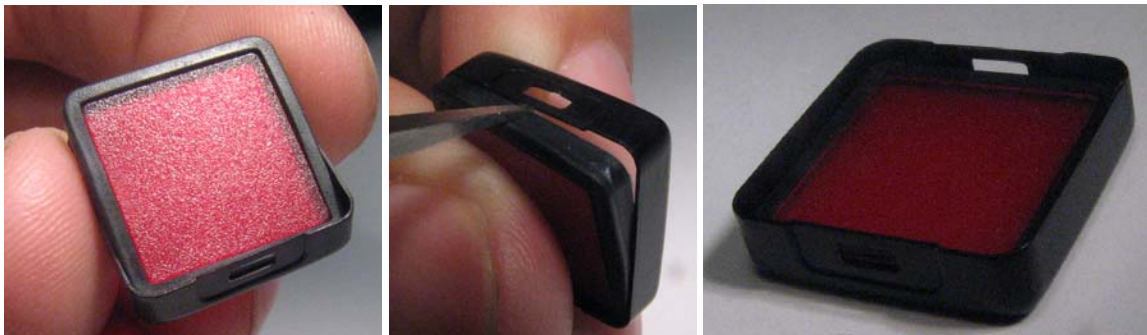


FIGURE 3

CAGE CODE	PART NO.	REV.	SHT.
12522	TB-218	1.1	8