

The background of the entire page is a dark blue, slightly grainy image of a submarine underwater. The submarine is angled upwards from the bottom left towards the top right. Its conning tower is visible in the upper center, and the main hull extends across the lower half of the frame. The lighting is dim, creating a sense of depth and mystery.

stacosystems™

Customized Human-Machine Interface Products for

# **NAVAL** SYSTEMS

SWITCHES | DATA ENTRY SYSTEMS | ILLUMINATED PANELS | SUBSYSTEMS

# water-resistant. easy to service.

Staco Systems ruggedized products are engineered for unique and extreme environments. Like yours.



S200 with watertight seal

## LED PUSHBUTTON SWITCHES & INDICATORS

Staco Systems Switches and Indicators are built to meet the most rugged specifications and provide a wide selection of options and display screen combinations. Our products have been certified with numerous standards boards, military and supplier certifications including AS9100 and MIL-SPEC (including MIL-PRF-22885 and MIL-STD-3009). Additional series not listed below can be found here: [www.stacosystems.com/products/switches](http://www.stacosystems.com/products/switches).

Parameters	Series 40	Series 50	Series 90	Series 200
Number of poles	1-4	1-4	1-2	1-4
Compact size				✓
Individual mount or matrix mount	✓	✓	✓	✓
Termination	Crimp-pin, solder, or PCB	Crimp-pin, solder, or PCB	Crimp-pin, solder, or PCB	Crimp-pin, Solder or PCB
Alternate or momentary switch action	✓	✓	✓	✓
Indicator	✓	✓	✓	✓
NBC washdown capabilities			✓ + HIGH SHOCK	✓ + HIGH SHOCK
NVIS compatible			✓	✓
Sunlight readable			✓	✓
LED illumination			✓	✓
Incandescent illumination	✓	✓	✓	
Non reflective display			✓	✓
Drip proof, splash proof, watertight seal options		✓	✓	✓ + Extreme Watertight
Common or split ground circuit configurations			✓	✓
MIL-PRF-22885 & MIL-STD-3009 qualified			✓	✓

4 x 6 Matrix with integrated PCBA, harness and drip proof boot seal designed to allow quick assembly or switch replacement, and certified to meet shock/vibration.

### The Challenges

Selecting the right pushbuttons, illuminated panels and data entry solutions is key when designing Human-Machine Interfaces such as launching, tracking, sighting, firing and ballast systems. Among the factors to be considered are: MIL-SPEC certifications, mission critical specifications and watertight capabilities.

Staco Systems designs and manufactures products that operate reliably in harsh conditions commonly found in marine environment. We provide our customers added value through our engineering expertise, custom design and low volume production. For a comprehensive list of our certifications, please visit : [www.stacosystems.com/why-staco/certification-qualifications/](http://www.stacosystems.com/why-staco/certification-qualifications/)



## DATA ENTRY SYSTEMS

Staco Systems can provide customized keyboards & keypads that are designed to meet stringent certification requirements for environmental, electrical, electromagnetic interference, and flammability. Many units are waterproof, environmentally sealed and chemical resistant.

Among the many keyboard options available are colored back-lighting, custom shape enclosures, custom keycap/print legends, branding, signal interface (I/O), and accessories/stand-alone pointing devices.

Staco Systems has the capability to manufacture LED backlit keyboards and NVIS Green A/B compliant data entry systems for operations that require visual enhancement at night.



Standard 4x4 Number Keypad



M879 keyboard is watertight sealed, meets NEMA type 4 rating and is built with elastomer for optimal sealing. It has an integrated touchpad, dimmable RED LED backlighting.



Custom enclosure available

## SUBSYSTEMS

Staco Systems offers design to requirements or built-to-print capabilities for naval system applications.

As with all Staco Systems products, our subsystems comply with military, industry and customer standards and practices. Staco Systems offers full project management and estimation including conceptual design, development, qualification, certification, manufacturing, and lifecycle support.

## ILLUMINATED PANELS

Staco Systems Ruggedized Wear-Resistant Illuminated Panels are the toughest, most advanced on the market. They're able to perform in any environmental condition. The patented, durable, polymer material surface and legends will never wear out, eliminating repairs and reducing life-cycle costs. Proprietary optical characteristics allow for state-of-the-art design capabilities in a panel display.

Staco also offers traditional painted panels, bezels and high reliability switch panels. Contact us for more information: [sales@stacosystems.com](mailto:sales@stacosystems.com)



Custom annunciation capability



Hidden annunciation capability



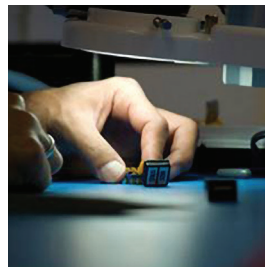
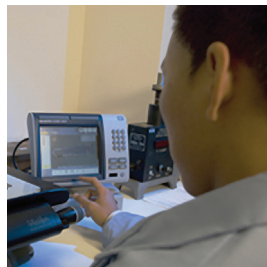
# stacosystems™



Every Staco Systems solution integrates our core expertise in optics, electrical and mechanical design, mechanical packaging, and human factors. Staco Systems is headquartered in North America, with sales support in Europe and Asia.

## Our Mission Statement:

At Staco Systems, our mission is to provide our customers with irreplaceable value in Human-Machine Interface solutions through team member engagement, continuous improvement and industry best practices.



## Contact Us

(949) 297-8700

[sales@stacosystems.com](mailto:sales@stacosystems.com)

7 Morgan, Irvine, CA 92618 USA

[www.stacosystems.com](http://www.stacosystems.com)